

MONTHLY MEMBERSHIP PROGRESS REPORT

LOCATION MARYLAND

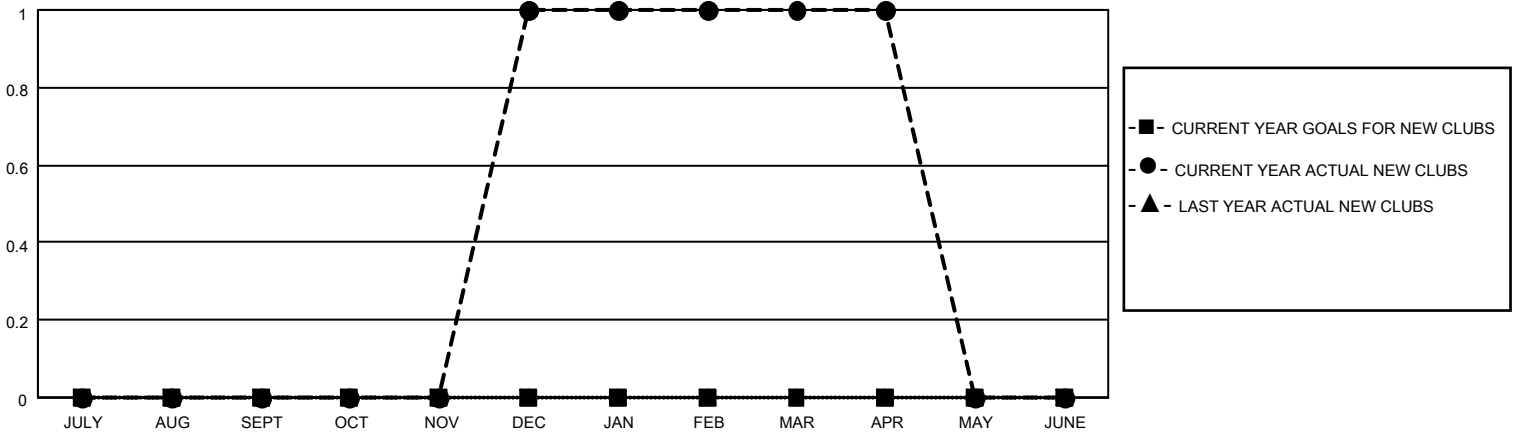
District 22 C

Results as of: 4/30/2022

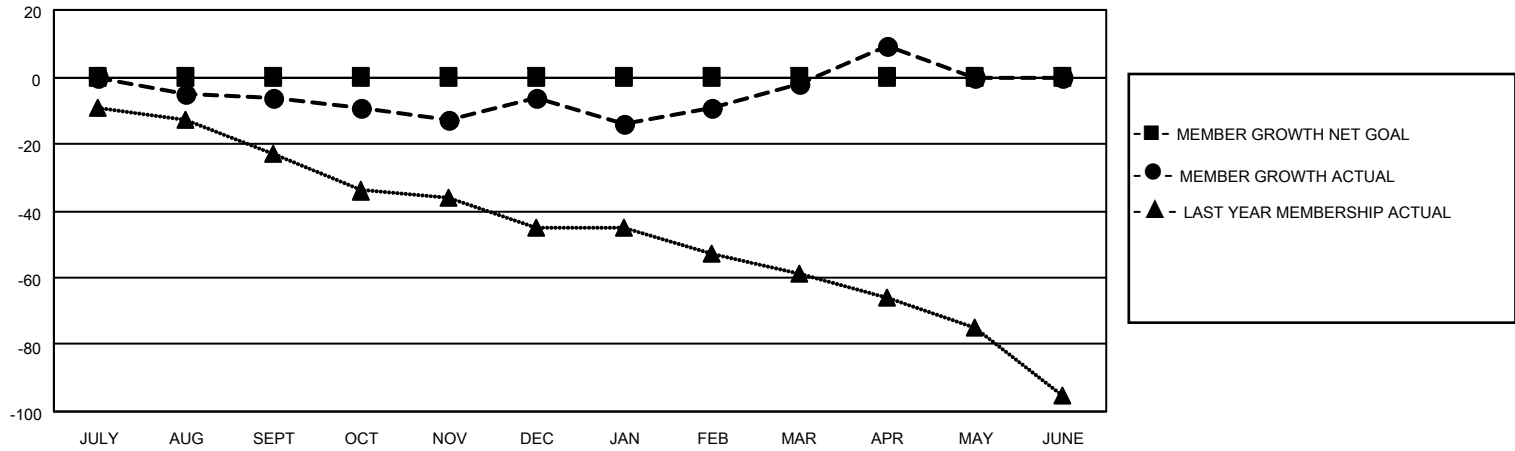
Clubs			
RESULTS FOR 2021-2022			
QUARTER	NEW CLUB GOAL	NEW CLUBS	DROPPED CLUBS
JULY/AUG/SEPT	0	0	2
OCT/NOV/DEC	0	1	0
JAN/FEB/MAR	0	0	1
APR/MAY/JUNE	0	0	0

Members			
RESULTS FOR 2021-2022			
QUARTER	MEMBER GROWTH NET GOAL	MEMBER GROWTH ACTUAL	DROPPED MEMBERS ACTUAL (including transfers)
JULY/AUG/SEPT	0	24	29
OCT/NOV/DEC	0	43	40
JAN/FEB/MAR	0	29	24
APR/MAY/JUNE	0	15	2

GOALS AND ACTUAL NEW CLUBS CUMULATIVE



GOALS AND ACTUAL MEMBERS CUMULATIVE



DROPPED CLUBS: 3

26 CLUBS OF 46 ADDED 1 OR MORE NEW MEMBERS

GENDER DISTRIBUTION

MALE	761 (64.55%)
FEMALE	418 (35.45%)
NON BINARY	0 (0.00%)
PREFER NOT TO ANSWER	0 (0.00%)

DROPPED MEMBERS

[CLICK HERE FOR CUMULATIVE MEMBERSHIP DATA](#)

DECEASED	26
CLUB CANCELLED	10
OTHER	59
TOTAL	95

TOTAL FAMILY UNIT MEMBERS	177
FAMILY MEMBERS PAYING HALF DUES	95